



Australian Childcare Alliance
Western Australia

FACING THE FUTURE – TOGETHER


ACA WA 2016 Early Education & Care Conference

19th – 21st August 2016
Esplanade Fremantle



Major Sponsors





Working together so your superheroes can save the day

The dedicated teams at Guild Insurance and Child Care Super work together to offer you products and services crafted specifically for the early learning industry.

For more information visit
guildinsurance.com.au or
childcaresuper.com.au

Better through experience.



FACING THE FUTURE – TOGETHER

Australian Childcare Alliance Western Australia (ACA WA), warmly welcomes you to our first Early Education & Care Conference.

Our conference theme is “Facing the Future Together” aptly named since the sector has had some of the biggest changes we have seen in the past few years. Now more than ever we need to come together and face these challenges and changes as one. Our very full two day program is jam-packed with workshops for all involved in Early Education & Care with ample opportunities to network with your colleagues and peers.

The conference begins on Friday evening with welcome drinks & canapes, a great opportunity to meet other approved providers, educators and suppliers to our industry. Saturday starts at 7am with registrations and exhibitor booths open. The conference will be officially opened by Minister Simpson in the main plenary at 8.15am, followed by the first key-note presentation, the day will continue with 5 consecutive workshops, running throughout the day. For those attending the “Glitz & Glamour” Gala Dinner, pre-dinner start at 6.30pm, followed by a 3 course dinner and entertainment till 11.30pm. Sunday morning starts a bit later but is once again a full day of workshops with our Keynote speaker Caroline Fewster opening.

We hope that our conference provides you with valuable opportunities to learn, discover, network and assist you in your own services. Once again welcome to our inaugural ACA WA conference.

Kind regards

Rachelle Tucker

Executive Officer ACA WA



WHO WE ARE

ACA WA is a members advocate association; ACA WA believes in quality education and care for all children in WA.

ACA WA is the only peak private long day child care centre association in WA. The Association and its members are committed to bringing together (at state and federal level) industry, government and community to achieve the best possible outcomes for children and families.

Members are represented by a diverse Committee from LDC, OSHC, Private, Community and Rural and Remote child care services. The Committee has federal and state representation which ensures that the voice of the WA sector is heard, and over the years has been successful in opposing and enacting many changes to the regulations in which we operate. ACA WA is also represented on a wide range of Committees and Task Forces that are focused on many aspects of the early education and care of children. ACA WA in conjunction with our Federal Body, Australian Childcare Alliance (ACA), also makes regular submissions to Government (both State and Federal) on Training, Industrial Relations, Government Reviews, Policy and Regulations.

ACA WA also supports Members with inquiries on issues such as Training, Industrial Relations and Regulations, and responds to inquiries and concerns from non-members and the public on subjects relating to the care of children.

ACA WA is committed to keeping members informed with current issues, supporting members with concerns and sourcing material that would benefit the successful running of a child care service. We believe that the Association should maintain a positive working relationship with all members, and work towards achievable goals.

ACA WA continuously remains involved in completing submissions to Government, both State and Federal, on, Training and making comment on any proposed changes at a Federal level. We support Members with inquiries on a range of issues covering, including, Industrial Relations, Education & Care Regulations, Occupational Safety & Health, Child Care Benefit plus much more. In addition, we respond to inquiries and concerns from non-members and the public on subjects relating to the care of children.

ACA WA committee:

President: Ann Marie Chemello, Vice President: Brett Thomson, Secretary: Shelley Prendergast, Treasurer: Frits Grader, Committee: Lisa Godwin, David Lyons, Natalie Green, Sheree Hunt, Associate Committee Member: Janelle Atwell





HISTORY OF ACA WA

Australian Childcare Alliance Western Australia (ACA WA), formally The Child Care Association of WA (CAWA), was formed in 1972 and was responsible for lobbying the Federal Government to provide funds training for Child Care workers.

The first training that was initiated was the Child Care Certificate (CCC) which was followed by the entry level training the Introduction to Child Care. The Association has subsequently been involved in quality issues, training, the development of programmes, updating regulations and Industrial Relations. Western Australia was the first state to have legislated Child Care Regulations and an Industrial Award for child care workers developed by the private child care industry. The emphasis has always been on developing quality services and keeping members up to date with Industry knowledge and assistance.

In 2014 the Childcare Association of WA Inc changed their name with the other State Associations to come under our National Body the Australian Childcare Alliance (ACA). We are very proud to now be known as Australian Childcare Alliance Western Australia (ACA WA).

Members of the Alliance believe:

- All children deserve a safe and secure environment that challenges and stimulates and offers time for discovery, reflection and collaboration.
- Parents have the right to feel confident that their children are being cared for in a safe and proactive environment that caters for individuality and different cultural backgrounds.
- Staff have the right to work in a centre of excellence which is committed to improving the conditions and public perception of early childhood educators and the industry.
- The community has the right to information and education about the benefits of quality early childhood care and education for WA children.
- It is our right to have a voice in the future direction of our industry.

THANK YOU TO OUR SPONSORS

GOLD SPONSOR



SILVER SPONSOR



BRONZE SPONSOR



GALA DINNER



WELCOME DRINKS



KEYNOTE 1



KEYNOTE 2



CONFERENCE GUIDE



WORKSHOPS



Resources for Preschool Programs



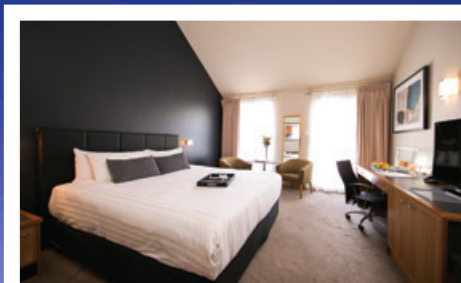
P 1800 251 497

teaching.com.au

THE VENUE

ESPLANADE HOTEL FREMANTLE BY RYDGES

An iconic hotel situated in the heart of Fremantle, overlooking the inner city oasis of the Esplanade Park, offering you 4 1/2 star comfort during the conference. During your stay you have full use of the resort-style leisure facilities. Take a dip in one of our two outdoor, heated swimming pools surrounded by tropical gardens, relax in one of three outdoor spas, there's also a sauna and fitness centre for your convenience.



Become a member of the Australian Childcare Alliance Western Australia

And have your voice heard!!

Membership of Australian Childcare Alliance WA is available to Approved Providers of Education and Care Services, people who are thinking of buying or building a service and suppliers to the sector.

ACA WA is a not for profit, member funded organisation, providing a fundamental link between members of the Association and the childcare industry.

Key activities include:

- Advocacy work to identify and resolve issues likely to impact on the sector
- Working with governments and other authorities on regulatory and compliance frameworks
- Critical advice and training for members.
- Liaison with suppliers to the sector
- Media commentary on issues and public education

NOT YET A MEMBER!

Join today by calling **1300 062 645**
email wa@childcarealliance.org.au
or visit www.wa.childcarealliance.org.au

ACA WA seeks to ensure that the industry's interests in general and members' interests in particular, are represented responsibly and that our activities and operations are presented to all stakeholders in a timely, professional and effective manner. ACA WA seeks to provide its members with access to valuable, reliable and quality resources via engagement with industry participants.

As a member you will have access to a wide range of benefits some that are listed below:

- State & Federal Representation
- Great discounts with our preferred suppliers
- Current, accurate information on regulations/legislation
- Website Centre advertising
- Access to advice/helpline
- ACA State and National conference registration discount
- Free advertising for staff on the CAWA website
- Direct links to appropriate forms
- Website with member only access to a variety of products & information
- Heavily reduced registration to ACA WA Forums & Conferences
- Member E-Newsletters
- State & Federal industry news & updates

SPEAKERS

ANDREA MUSULIN AMBASSADOR PBWA

Andrea has been a police officer with the WA Police for the past 30 years and during this time has specialised in the areas of Child Protection and Domestic Violence. Andrea has extensive experience in the field of child sexual and physical abuse both in a proactive and reactive manner. Andrea is currently on leave without pay from the WA Police to take up her role of Safeguarding Officer for the Perth Catholic Archdiocese.

Andrea is currently the Ambassador and the longest serving member of Protective Behaviours WA and joined the organisation in 1993. Andrea is highly regarded in WA as a powerful trainer and successful advocate and innovator in the prevention of child sexual abuse.

As a mother of 6 children and a grandmother of two she brings to the organisation a wealth of knowledge and an undying commitment to the protection of children across WA.

Andrea has been highly commended for her services to women and children and has earned numerous nominations in recognition of her contributions across WA. Andrea was also inducted into the WA Inaugural International Women's Hall of Fame in March 2011 as a leader and pioneer in the Child Protection Industry.

When presenting Andrea uses a direct but humorous approach in sharing her many experiences in raising resilient and safe children in a very challenging and ever changing world.

RACHAEL ROBERTSON KEYNOTE

Saturday 9.00am Leading on the Edge – The future of Teamwork.

Saturday 10.30am – “The Bacon Wars – a 2 question decision-making model to know when to Step In, Step Back”

Rachael Robertson returned to Australia after 12 months in the Antarctic, where she successfully led an expedition to Davis Station. She is only the second female to ever lead a team at the Station and one of the youngest ever leaders.

This leadership role is a truly unique experience. Antarctica in winter is totally inaccessible which means once the last ship leaves at the end of February, no one can leave the base under any circumstance until the ship returns in November. It's a 24 hour a day, every day of the year, leadership role.

Rachael led a team of 18 people through the long, dark, Antarctic winter. It's the most extreme workplace on the planet where a culture of safety leadership is vital. Through trial and error she built a resilient and highly successful team based on the foundation that 'respect trumps harmony'.

Prior to leading the expedition Rachael had 16 years' experience in a variety of senior operational roles in complex and challenging environments.

Since returning to Australia, Rachael has completed her MBA, written a best-selling book on her experience, Leading on the Edge, and has presented at over 600 conferences and events around the world.



CAROLINE FEWSTER KEYNOTE

Sunday 9.30am – “What makes Early Childhood settings great places to be?”. **Saturday 1.00pm** – An Invitation to Play

Before developing Bond University's Bachelor of Children's Services' programme, Caroline enjoyed a long and varied career working in a wide range of Children's Services' care and teaching situations starting as a pre-school teacher in ACT progressing to advisory and consultancy roles with regional and government education authorities. Her experience encompasses all aspects of early childhood learning from classroom teaching to managing services and from educating future teachers to consulting and developing professional development programmes. She continues to consult for a range of non-government community-based and corporate organisations, local state and the Commonwealth government offering early childhood educators a wealth of real world knowledge combined with high level qualifications and superior teaching skills.

Whilst at Bond University, Caroline won the first academic award for her work in teaching students who now work in Children's Services world-wide.

Since July 2012 Caroline exclusively devotes her time and experience working extensively with Children's Services throughout Australia developing customised professional development programmes for early childhood educators. Feedback indicates the success of the 'wonderful innovative and practical ideas that she demonstrates during the programmes'.

BRIANNA CASEY CHIEF EXECUTIVE OFFICER, FOODBANK AUSTRALIA – MC

Brianna is the Chief Executive Officer of Foodbank Australia, the largest hunger relief organisation in Australia. Brianna joined Foodbank Australia in July 2016, following her successful three-year term as Chief Executive Officer of Australian Childcare Alliance New South Wales, the peak body for privately owned long day care services in NSW. Prior to that, she spent 14 years in agri-politics, both in NSW and Queensland. Brianna joined Queensland Farmers' Federation straight out of university as an Environment Policy Advisor and was appointed Executive Director at the age of 23 following a restructuring in the organisation. She relocated to Sydney in 2005, joining the country's largest farm lobby group, NSW Farmers Association, as a Rural Affairs Policy Director, and later an Environment Policy Director, responsible for the provision of strategic policy advice on a range of contentious policy issues, from rural mental health to mining and coal seam gas. Brianna has served on a number of Ministerial Advisory Councils and committees throughout her career, most recently the Federal Government's Ministerial Advisory Council for Child Care and Early Learning. In her personal time, Brianna is the Secretary of the Outside School Hours Care centre at her sons' school, and is an Age Manager at her local Little Athletics centre. She has a Bachelor of Science in Australian Environmental Studies, is a graduate of the iconic Australian Rural Leadership Program and a proud member of the Australian Society of Association Executives.



GUDRUN GILLES **GOODRUN SOLUTIONS**

Saturday 10.30am – An introduction to the “Why, What & How” of sustainable partnerships with individuals, families & communities from culturally diverse backgrounds. **Saturday 3.00pm** – Does it take a village to raise a ‘child’ or do ‘Children make the Village’?

From the start of her career social inclusion and equity have been a passion for Gudrun. With qualifications in social pedagogies, facilitation and business management she has worked in the human services field for over 25 years in Europe, South East Asia and Australia. Her focus of work in recent years has been cultural competency and inclusive practices of people services.

Gudrun has been working in her own business since 2001 and as part of this is leading and managing Bicultural Inclusion Support Services (BISS), a program promoting inclusion and cultural competence across the early care and education sector in Western Australia and the Northern Territory since 2007.

Gudrun is an experienced presenter and facilitator and has published articles and information sheets.

To find out more please access our website on www.goodrunsolutions.com.au



KIMBERLEY BEASLEY

Outdoor Play Spaces from a Child's Perspective: Affordances for Connoisseurship

Kimberley Beasley has been in the early childhood profession for 20 years and has experience as a teacher, director, trainer, lecturer, validator, consultant and qualified landscape designer. She has a Master of Philosophy in Early Childhood, lectures online for Curtin University and owns 2 businesses. Her landscaping company, Childscapes, designs and builds natural playspaces for early childhood services and schools and her other business, Early Childhood PD, delivers consulting and training to childcare services.

Kim is dedicated to raising the standards in early childhood for better outcomes for young children and is passionate about providing places for young children to connect with nature.



MARK EVANS **CHILDCARE CENTRE DESKTOP**

Sunday 2.00pm – The Commercial Seasons of Childcare

Mark is the owner and Director of the Childcare Centre Desktop which is a national online support program for all childcare service types. The 'Desktop' – as it's referred to by members, assists over 1000 services around Australia with a primary focus to deliver affordable, easy-to-access resources that save you time, support compliance and ultimately relieve the day-to-day stress of operation.

Our mission – “To facilitate time recovery so you can focus more on preparing the children in your care for life beyond the walls of your childcare service”

In 2007 Mark was contracted by a NSW based company to project manage and develop a small chain of childcare services on the Central Coast of NSW. Direct responsibilities included: tender and license applications, recruitment of Educators and team building, operational effectiveness planning, NQS & Regulation compliance, quality improvement and financial control.

During this time Mark recognised the need for clear communication and consistent quality of care from each team of Educators. The 'Desktop' supported these outcomes and has since matured into a resource library available to all childcare service types irrespective of location or financial position.



GLEN TAYLOR **GENESIS BUSINESS ADVISORS**

Saturday 2.45pm – KPI's for the Business & Staff

Glenn has been a mentor to the Curtin Centre for Entrepreneurship since 1995, and a presenter since 2003. He is a Director of Genesis Business Advisers, a niche business advisory firm servicing the small and medium enterprise sector in Western Australia. Glenn has an engineering degree, post graduate diploma in management, is a graduate of the Australian Institute of Company Directors and is a Certified Management Consultant. He is a very experienced management consultant that enjoys operating as a business coach to small and medium sized businesses across Western Australia. Glenn's goal is to assist businesses achieve sustainable growth by focusing on the three key aspects of organizational development, namely people, systems and leadership.



JENNI MAGENTA AND JAN SPENCE THE PLAY CAFÉ

**Saturday 10.30am & Sunday
11.30am** – The Play Café (Maths & Science)

Jenni and Jan have scored a combined 65 years of experience in Children's Services and the Community Services industry, which indicates longevity and dedication to the cause – and senior status for one of them.

Jenni holds the Diploma of Children's Services, Jan has a Teaching Qualification and Graduate Diploma in education (Training and Development). Both hold TAE40110 Certificate IV in Training and Assessment and the LLN unit of competency.

Jenni has worked for the National Childcare Accreditation Council as a validator, and is the lead educator in a prominent children's service, which keeps her skills current. Both have extensive experience in leading quality audits in education and care services, are parent educators and have delivered workshops to parents around the metropolitan area on nutrition, sleep and behaviour. Jenni and Jan are accomplished public speakers and are sought – after facilitators, having delivered professional development to early childhood educators in metropolitan and rural services in WA, for a collective 32 years.

Jan has worked as an educator in schools, Early Childhood programs, LDC, FDC and OSHC. She was Director of Studies for the first private RTO dedicated to Children's Services in WA, and Manager of an RTO and Children and parent services in the non-profit sector. She has facilitated professional development programs for directors of children's services, early childhood educators and primary school principals.

Together they are passionate about inspiring educators, encouraging them to be proud of the job they do and to realise the importance of the role they have in education in the early years. They believe children learn through play and develop an understanding of themselves and their world through active, hands-on investigation. A supportive, vigorous learning environment encourages children to engage in and with the environment, and provides a choice of authentic, meaningful experiences.

They believe an educator's role is to support children to retain their innate sense of wonder, which means that each educator needs to foster their own ability to observe, hypothesise, reflect and challenge. They believe that social learning is essential and children glean skills from their peers in a positive way, especially when educators assist them to do so. Similarly, Professional Development for the sector must relate to educators, be authentic, dynamic, meaningful and thought-provoking.

Their workshops are inspirational, interactive and always fun.



JENNIFER RIBAROVSKI JR EDUCATION CONSULTING SERVICES

Saturday 10.30am – Early Childhood Curriculum & Pedagogy.
Sunday 2.00pm – Peaceful Possibilities

Jennifer Ribarovski is the Principal of JR Education Consulting Services, an Australia wide service supporting educators and providers of early childhood education and outside school hours care services. She has a Bachelor of Early Childhood Education and a Master of Educational Leadership and Management with Distinction. Jennifer has over thirty years' experience in the education sector, and has taught in preschools, early childhood centres, public schools and at universities and has a wealth of experience in translating educational theory into practice. More recently she has held executive positions at the NSW Regulatory Authority, ACECQA, and with a large national provider of early childhood education and care services. Jennifer has played a key role in the implementation of the National Quality Framework and has trained authorised officers to assess services against the National Quality Standard, and has developed curriculum and support documents to assist educators in their pedagogical journey. Jennifer is committed to quality improvement in the early childhood education sector, through supporting educators in their important work with children.



CLAUDE STRNADICA SENIOR RELATIONSHIP MANAGER – COMMERCIAL BANKING

Saturday 12.45pm – Bankwest, Industry, Finance & Performance
Connecting the dots

Sixteen years commercial & business banking experience with multiple senior and leadership roles.

Key focus: Business development & expansion for commercial business operations including property and business acquisition, growth and financing.

Specialised banking experience in childcare & allied health sectors including management of both business and property owners associated with these sectors, as well as property developers associated with the childcare industry.



TRACY BLASZKOW KIDSAFE WA

Saturday 10.30am – Naturally Kids Play

Tracy is an Accredited Level 3 Playground Inspector and has over 14 years' experience working in playground safety and design with local government, schools and community groups all over WA. As Manager of Kidsafe WA's Independent Playground Advisory Service she works with organisations delivering playground safety and maintenance workshops, performing independent safety assessments and consulting with communities to find out what they want in their local playground. Tracy was recently accepted onto the CS-005 Australian Standards Committee, has a passion for Nature Play and would like to show everyone how you can make safe and exciting playspaces by thinking outside the square.



NESHA ONEIL

Saturday 3.00pm – EYLF for Educators

Sunday 11.30pm – EYLF/NQF/NQS what does it all mean

Nesha O'Neil is the President of ACANSW and the Treasurer of ACA's national body. She is sought-after as an industry expert in early childhood education and care, consulting to a range of organisations across Australia and speaking at conferences both nationally and internationally. You will recognise her from tv, speaking about issues within Early Childhood Education.

Nesha's family has been operating child care centres in Sydney since the 1950s. Nesha has owned and operated centres herself since 2003. Her centres are frequently featured in industry magazines, newspapers and specialist publications as stand-out services. After the introduction of the National Quality Framework, her services were some of the first in Australia to achieve the rating of 'Exceeding' the National Quality Standards.

She continues a hands-on approach to centre operation, and is acutely aware of the issues facing operators, families and our children. Like you, she launches into every day with the monumental task of balancing children's needs with pedagogy, family relationships with paperwork, spontaneity with an approved curriculum framework – and plays 'what rash is that?' with various children & educators.

Nesha prides herself on her strong has strong relationships with peers across all parts of the early education sector, and works hard to collaborate with colleagues at all levels.

Nesha holds a Bachelor's Degree in Psychology and in English, a Masters Degree in Psychology, a Post Graduate Certificate in Counselling, a Post Graduate Certificate in Special Education – Inclusive Support and a Diploma in Children's Services. Nesha is a registered senior supervising psychologist, a long standing Member of the Australian Psychological Society, and a Justice of the Peace. She also has a Cert IV in Training and Assessment.

Her workshops are a mix of intense theory, experience and stand up comedy. You will learn, you will laugh, and you will return to your services with some strategies for moving your team towards an amazing service. The last time Nesha presented workshops in Perth, it was standing room only with hundreds of people disappointed to miss out – so don't let that be you. Register Now.

REMIDA

Saturday 1.00pm – 100 Languages of Children

REmida is a creative reuse centre in West Perth that collects industrial off cuts from industry, saving these items from landfill! We run a series of creative reuse workshops for children and professionals that encourage valuing waste and inspire the use of reuse materials as a sustainable resource for all learning environments. Go to www.remidawa.com for more information



ROS SAMBELL AHD NETWORK

Saturday 3.00pm – “Nurture yourself & your organisation”

Ros Sambell, has had 25 years' experience as a corporate nutritionist working with the early year's sector and was on the original steering group that established the Start Right Eat Right program and awards scheme two decades ago. Ros is lecturer at Edith Cowan University (ECU) and is currently undertaking her PhD in nutrition education and food provision across the aged and early years sectors. Ros has had strategic roles at ECU and the community as the Course Coordinator of the Master of Public Health and Deputy Chair for Nutrition Australia WA. Ros is currently a Co-Lead for Jamie's Ministry of Food Program at ECU. She is also the Director of the Australasian Health Development Network Pty Ltd and is committed to the training and development of Australians who are in the business of caring.

Ros believes we should be using food to nurture and not torture ourselves and sees this as a way of improving the quality of life for people in this sector. Ros would like to see this new found knowledge, around the subtleties of eating, shared with both parents and children to improve their future health outcomes as well as your own – healthy eating isn't meant to be complicated, it's meant to be good for you.

AMANDA DEVINE AHD NETWORK

Saturday 3.00pm – “Nurture yourself & your organisation”

Amanda Devine, has had 25 years' experience in research at UWA and ECU and been an investigator on more than 50 nutrition related research projects with total funding worth over \$4.2m from nationally competitive grants and Australian and WA government tenders. She translated research into practice through her role as Chair of Nutrition Australia WA Division for more than 10 years and is now an Associate Professor at Edith Cowan University and the Co-Director of Australasian Health Development Network Pty Ltd.

Amanda has been on the WA Food Science & Technology, School Curriculum and Standards Authority Committee for 10 years and has a role in nutrition education from the early year's sector through to Year 12. She is committed to training our educators and has supervised innovative research and developed websites to educate teachers and in those in the early years sector.

Amanda is currently a Co-Lead for Jamie's Ministry of Food Program at ECU and is passionate about food literacy and explain how good nutrition can influence health and vitality. She is eager to share the knowledge of how to nurture mind and body through food variety and optimize wellness and reduce chronic disease.



ANGE BARRY
CEO STEPHANIE
ALEXANDER KITCHEN
GARDEN FOUNDATION

Sunday 11.30am & 2.00pm
- Growing your minds with
Pleasurable Food Education

Ange Barry is the Chief Executive Officer of the Stephanie Alexander Kitchen Garden Foundation. Ange joined Stephanie Alexander in August 2006 to manage the growth of the organisation and to pursue the Foundation goal of growing the Kitchen Garden Program. Ange has led the development of an incredibly successful, close-knit Foundation team, and has overseen the expansion of the Program from three Victorian schools in 2006 to over 800 schools across Australia in 2015. The lives of thousands of children and their families are now being enriched by this innovative, successful model of pleasurable food education.

Ange has played a vital role in building the Government, corporate and community relationships that have fostered the rapid growth of the Kitchen Garden Foundation. The Foundation's work is supported by all levels of government, including Health and Education Departments, and is referenced by health prevention bodies as a key contributor to promoting healthy behaviours in children and addressing the current childhood obesity crisis. The Kitchen Garden Program model attracts international interest from many other agencies, and Ange continues to mentor many organisations looking to the Foundation as a leader in food education for children. The Program is currently being replicated by Jamie Oliver's Kitchen Garden Project, which is bringing a similar model to hundreds of schools across the UK.

Ange's previous experience includes a career in regional management in the financial sector, instrumental management and leadership roles in the community sector, and ownership of a small business during her family years.

MARCELLE COAKLEY
STEPHANIE ALEXANDER
KITCHEN GARDEN
FOUNDATION

Sunday 11.30am & 2.00pm
- Growing your minds with
Pleasurable Food Education

Marcelle Coakley has been a much-treasured employee of the Stephanie Alexander Kitchen Garden Foundation since 2011. Working in slightly different capacities throughout the evolution of the organisation, Marcelle remains the Foundation's team member in Western Australia and maintains an extensive network of food education stakeholders.

Marcelle currently provides advice, skills, knowledge and inspiration to participating Program schools, members and the public to ensure best practice delivery of the Program and growth of pleasurable food education, while proactively and consistently facilitating the sharing of knowledge between these groups.

Before joining the Foundation, Marcelle undertook extensive work with Aboriginal schools and communities across WA, in addition to collaborating with organisations and networks to deliver training and support to school staff and community members. She maintains a strong focus in community gardening projects, health and wellbeing, and received the Pride of Australia medal for Community Spirit in 2008.



DEE ROCHE
AHD NETWORK

Saturday 1.00pm - Leading from
where you stand

Director Dee Roche Leadership
Development Consultancy
Adjunct Professor University of
Western Australia Business School

Senior Management Consultant
AIMWA-UWA Business School Executive Education

Dee has been facilitating, public speaking; teaching and working with groups for over 25 years within the not for profit, public and private sectors.

Dee has significant experience in the area of Leadership and Organisational Cultural Change and Transformation. Her diverse portfolio also includes experience in leading large scale change in both local government; state government and corporate organisations. Notably Dee has assisted numerous large Public and Private Sector organisations in developing their Strategic Plans and reviewing their Strategies on an ongoing basis.

Dee also currently lectures on Strategic Change and Transformation at the University of Western Australia Business School on both the Executive MBA and the MBA Programs; and is the 2013 Winner and 2014 & 2015 Nominee of the University of Western Australia Excellence in Teaching Award; 2014 Winner UWA Excellence in Teaching and Research Awards (Program Award); and 2014 Nominee for the Western Australian Women's Hall of Fame.

NADIA WILSON-ALI
QUALITY INCLUSION
CONSULTANT/ DIRECTOR
OF CAMPUS CHILD
AUSTRALIA -

Sunday 11.30am - A Dependable
Best Friend - Primary Caregiving
in Education & Care Services

With a unique shared role of Quality Inclusion Consultant and Director of Campus, Nadia has an integrated understanding of the Education and Care Sector in WA. Nadia has a keen interest in relationship-based curriculum and is currently a Research Student at Edith Cowan University. Nadia is an advocate for respectful relationships and enjoys the support that she can offer her team and other services in this regard. Nadia is passionate about creating environments for children that are creative, educational and unique to each service.

CHRISTIE BOUCHER
CLIENT RISK AND
DEVELOPMENT
EXECUTIVE, GUILD
INSURANCE

Sunday 2.00pm - Understanding
Employment Based Risks

Christie has over 15 years' experience as an educator having started her career as a secondary school health and physical education teacher. Over the past 10 years Christie's career has been focused on developing risk management education resources and programs for various health and other professionals. Christie has a keen interest in the role education can play in managing risk by raising awareness and changing behaviour.





Understanding your business, not just your banking.

At Bankwest, our specialised expertise means we have extensive experience in supporting operators, investors and developers of childcare.

We have a range of products for your business, and our client centric structure means you will have a dedicated team, devoted to understanding your business.

Whether you're looking to make day to day management of finances easier, consolidating, or financing growth, our team of specialists aims to tailor banking solutions to suit your business needs.

To enjoy the benefits that come from working with Bankwest's experienced team, please contact us today.

Claude Strnadica

Senior Relationship Manager

☎ 0438 913 297

✉ Claude.Strnadica@bankwest.com.au

Daniel Genoni

Relationship Manager

☎ 0457 539 617

✉ Daniel.Genoni@bankwest.com.au

Jamie Beattie

Assistant Relationship Manager

☎ 08 9433 7343

✉ Jamie.Beattie@bankwest.com.au

PROGRAM GUIDE

FRIDAY 19TH AUGUST 2016			
TIME	EVENT		WHERE
1.00pm	Exhibitor set up		See page 22
4.30pm – 6.30pm	Registration		See page 22
7.00pm – 9.00pm	Welcome Drinks and Canapes		Exhibitor area
SATURDAY 20TH AUGUST 2016			
TIME	EVENT		WHERE
7.00am – 8.00am	Registration & Trade Exhibition		
8.15am – 8.45am	Welcome & Overview Minister Simpson to officially open the conference and acknowledgement to country		Main Plenary
8.45am – 9.00am	The Guild Group – Gold Sponsor		
9.00am – 10.00am	Key Note Rachael Robertson <i>Leading on the Edge – The future of teamwork and why respect trumps harmony</i>		Main Plenary
10.00am – 10.30am	Morning Tea	10.00am – 10.30am	Morning Tea Educators
10.30am – 11.45am	Approved Providers/Managers	<i>“The Bacon Wars – a 2 question decision-making model to know when to Step In, Step Back”</i> – Rachael Robertson	Rottnest Room
10.30am – 12.00pm	Director’s/2IC’s/Educational Leaders	<i>Early Childhood Curriculum and pedagogy</i> - JR Education Consulting Services -Jennifer Ribarovski	Pleiades
10.30am – 12.00pm	Educators	<i>Naturally Kids Play</i> – Kidsafe WA, Tracy Blaszkow	Sirius
10.30am – 12.00pm	Educators/ Managers/Approved Providers/Director’s/2IC’s/Educational Leaders	<i>An introduction to the “Why, What & How” of sustainable partnerships with individuals, families & communities from culturally diverse backgrounds</i> - Goodrun Solutions – Gudrun Gilles	Orion
10.30am – 12.00pm	Educators	<i>The Play Café</i> – Jan Spence & Jenni Magenta	Carnac/Garden
11.45am – 12.45pm	Lunch	12.00pm – 1.00pm	Lunch Educators
12.45pm – 2.15pm	Approved Providers/Managers	<i>Industry, Finance & Performance</i> – Connecting the Dots – Bankwest – Claude Strnadica	Rottnest Room
1.00pm – 2.30pm	Director’s/2IC’s/Educational Leaders	<i>Leading from where you stand</i> – AHD Network – Dee Roche	Pleiades
1.00pm – 2.30pm	Educators	<i>100 Languages of Children</i> – Remida	Sirius
1.00pm – 2.30pm	All delegates	<i>Outdoor Play Spaces from a Child’s Perspective: Affordances for Connoisseurship</i> – Kimberley Beasley	Orion
1.00pm – 2.30pm	Educators	<i>An Invitation to Play</i> - Caroline Fewster	Carnac/Garden
2.15pm – 2.45pm	Afternoon Tea	2.30pm – 3.00pm	Afternoon Tea Educators
2.45pm – 4.15pm	Approved Providers/Managers	<i>KPI’s for the Business & Staff</i> – Genesis Business Advisors – Glenn Taylor	Rottnest Room
3.00pm – 4.30pm	Director’s/2IC’s/Educational Leaders	<i>“Nurture yourself and your organisation”</i> – AHD Network	Pleiades
3.00pm – 4.30pm	Educators	<i>EYLF for Educators</i> – Nesha O’Neil	Carnac/Garden
3.00pm – 4.30pm	Educators/ Managers/Approved Providers/Director’s/2IC’s/Educational Leaders	<i>Does it take a village to raise a ‘child’ or do ‘Children make the Village’?</i> ²- Goodrun Solutions – Gudrun Gilles	Orion
3.00pm – 4.30pm	Educators	<i>Protective Behaviours WA</i> – Andrea Muslulin & Jodie Spriljan	Sirius
4.15 – 5.00pm	Trade Exhibition	4.30 – 5.00pm	Trade exhibition
	All Delegates		
	Gala Dinner		
6.30pm – 7.30pm	Dinner Delegates	Pre-Dinner Drinks	
7.30pm – 11.30pm	Dinner Delegates	Gala Dinner “Glitz & Glamour”	
			Main Plenary

Sunday 21st August			
TIME	EVENT		WHERE
8.00am – 9.00am	Registration & Trade Exhibition		
9.00am – 9.15am	Welcome & Overview		Main Plenary
9.15am – 9.30am	MTA – Silver Sponsor		
9.30am – 11.00am	Keynote	<i>What makes early childhood settings great places to be? – Caroline Fewster</i>	
11.00am – 11.30am	Morning Tea	11.00am – 11.30am	Morning Tea
11.30am – 1.00pm	Approved Providers/Managers/Director's/2IC's	WA State of Play on the National Scene – ECRU "Leading through a Critical change Environment" – Brianna Casey	Sirius
11.30am – 1.00pm	Open to all delegates	A Dependable Best Friend- Primary Caregiving in Education and Care Services – Child Australia – Nadia Wilson-Ali	Rottneest Room
11.30am – 1.00pm	Educators	EYLF/NQF/NQS/A&R/ACECQA what does it all mean? – Nesha O'Neil	Pleiades
11.30am – 1.00pm	Educators	The Play Café – Jan Spence & Jenni Magenta	Orion
	Open to all delegates	Growing Young Minds with Pleasurable Food Education – Marcelle Coakley & Ange Barry, Stephanie Alexander Kitchen Garden Foundation	Carnac/Garden
1.00pm – 2.00pm	Lunch	1.00pm – 2.00pm	
2.00pm – 3.30pm	Approved Providers/Managers	The Commercial Seasons of Childcare – Childcare Centre Desktop – Mark Evans	Rottneest Room
2.00pm – 3.30pm	Open to all delegates	Risk Assessment – Guild Group	Pleiades
2.00pm – 3.30pm	Open to all delegates	QIP the living Document – ECRU / Demystifying the Assessment and Rating Visit – ECRU	Sirius
2.00pm – 3.30pm	Open to all delegates	Peaceful Possibilities – JR Education Consulting Services –Jennifer Ribarovski	Orion
	Open to all delegates	Growing Young Minds with Pleasurable Food Education – Marcelle Coakley & Ange Barry, Stephanie Alexander Kitchen Garden Foundation	Carnac/Garden
3.30pm – 4.00pm	Closing	3.30pm – 4.00pm	
	All Delegates	Thank you and presentations	Main Plenary



Create a
Career
with



Inspire, lead and develop

- Boost your early childhood career with our exciting **Career Pathways**
- Grow your knowledge and skills through our accredited **Professional Development and Training, Best Practice Workshops** and our **Leadership & Management Programs**
- Treat yourself through our tailored **Employee Benefits Program** and enhance your work/life balance with our dedicated **Health and Wellness Program**

visit careers.g8education.edu.au



St John

First aid saves lives.

Learn lifesaving first aid skills with a St John first aid course.

Our nationally accredited first aid course for education staff and child carers will teach you how to provide first aid, with a specific focus on infants and children. You'll also learn how to manage asthmatic and anaphylaxis emergencies.

Special Offer

25%
OFF

Book before 30 June 2016 and **receive 25% off the course.*** Quote promo code **ACAWA**.

Call **1300 STJOHN** or visit stjohnambulance.com.au

*Discount applies to the HLTAID004 Provide a first aid response in an education and care setting course. Perth metro area only. Not to be used in conjunction with any other offer.

SESSION INFORMATION

The future of teamwork and why respect trumps harmony – Rachael Robertson

KEY-NOTE PRESENTATION SATURDAY

QUALITY AREA 7

Imagine living in months of darkness, the temperature hovers around minus 35 degrees and you're stuck inside with no escape from your workplace or staff... There's no way in, and no way out,

Antarctic Expedition Leader, Rachael Robertson, will reveal how she kept her team inspired and productive through Antarctica's long, dark winter. She explains why respect trumps harmony and how she built a culture of integrity and trust with a very diverse group of complete strangers.

In this session Rachael will provide the tools to:

- build respect and teamwork through open communication and No Triangles
- stop the 'answer shopping' that happens in many teams
- understand and deal directly with those little things that can be symptoms of deeper cultural issues... dirty coffee mugs?
- lead through tough times and turn moments into momentum
- manage the constant scrutiny and spotlight of leadership, both in and outside the workplace

Using real life examples, Rachael shares her insights from a year on the ice - where she managed everything from a search-and-rescue following a plane crash, to resolving a peaceful settlement to the Bacon War.

Early Childhood Curriculum and pedagogy – Jennifer Ribarovski

QUALITY AREA 1

Jennifer has over thirty years' experience in the education sector, including playing a key role in the implementation of the NQF for both the NSW Regulatory Authority and ACECQA.

She has trained authorised officers to assess against the National Quality Standard, and has developed curriculum and support documents to assist educators in their pedagogical journey.

Jennifer has taught in preschools, early childhood centres, public schools, at universities and has a wealth of experience in translating educational theory into practice.

Jennifer has a Bachelor of Early Childhood Education and holds a Master of Educational Leadership and Management with Distinction.

Participants will understand:

- The intention of the National Quality Framework and the ways in which the pieces fit together
- Quality Area One of the National Quality Standard and implications for early childhood curriculum (including the EYLF)
- Quality Area One of the National Quality Standard and implications for pedagogy
- Quality Area One of the National Quality Standard and documentation
- That the cycle of planning underpins curriculum and pedagogy
- The interrelated nature of the NQS, and how Quality Area One integrates with other quality areas in practice

Naturally Kids Play – Kidsafe WA – Tracy Blaszkow

QUALITY AREA 3

Natural play spaces are exciting, imaginative, creative, challenging and sometimes dirty!

Natural Playgrounds offer financial benefits, as well. They're less expensive than equipment, they aren't replaced when safety regulations change, they can lower playground injuries, they offer higher play value at lower cost, and they're part of the greening movement that reduces costly environmental impacts. And --- they're perfect outdoor classrooms!

Let's talk about what Natural Play can do to benefit all children and see the possibilities that natural play can open up for you in your playground and most importantly create memorable play spaces for your children.

Participants will have a better understanding of what they can implement in their outdoor spaces for a relatively small budget.

An introduction to the "Why, What & How" of sustainable partnerships with individuals, families & communities from culturally diverse backgrounds – Gudrun Gilles

Are you wondering why, how and with which community groups you should connect as an educator and how to strengthen your ability to be respectful and celebrate children's and families' cultures?

This interactive workshop will help you along the journey of developing, building and maintaining sustainable community partnerships that are relevant to you as an educator and the children in your service.

Discover the profile of your community environment; identify how to know who will be a good connection.

This is an introductory workshop will provide the tools for you as an educator to be intentional in relation to family, culture and community.

- Educators will know how (and have tools) to profile their cultural environment
- Educators will have identified strategies to engage with children/families/communities of their professional environment
- Educators will have commenced the development of an action plan to take back to their work environment

TAILORED PROFESSIONAL DEVELOPMENT

- + Positive workplace culture with FiSH! Philosophy
- + Technology integration to balance tradition
- + Reggio and technology
- + Communication and Leadership
- + Creativity redefined

We are qualified, experienced and passionate

M: 0428 925 400

info@jalison.com.au

www.jalison.com.au



An Introduction to the ‘Why, What and How’ of sustainable partnerships with individuals, families and communities from culturally diverse backgrounds – Gudrun Gilles

QUALITY AREA 1 & 6

Are you wondering why, how and with which community groups you should connect as an educator and how to strengthen your ability to be respectful and celebrate children's and families' cultures?

This interactive workshop will help you along the journey of developing, building and maintaining sustainable community partnerships that are relevant to you as an educator and the children in your service.

Discover the profile of your community environment; identify how to know who will be a good connection.

This is an introductory workshop will provide the tools for you as an educator to be intentional in relation to family, culture and community.

Session outcomes

- Educators will know how (and have tools) to profile their cultural environment
- Educators will have identified strategies to engage with children/families/communities of their professional environment
- Educators will have commenced the development of an action plan to take back to their work environment

The Bacon Wars – Rachael Robertson

QUALITY AREA 7

Leadership is all about knowing what to do in a specific situation. Do you intervene or ignore, do you escalate or diffuse a situation. Leaders and managers need a practical way to work out how to respond to any given situation.

Step In, Step Back is a practical framework to help leaders assess how to deal with any situation in the workplace. At its core is an understanding two areas: how the issue impacts the “values” of the organisation and how broadly the issue occurs. From these two dimensions, four leadership approaches are recommended. The trick, however, is knowing what to do in the grey areas.

This workshop is suitable for new and emerging managers and for senior managers wishing to have a framework for what they intuitively do.

Workshop objectives:

- Understand Why values and breadth are the key dimensions of any issue
- Understand What the Step In, Step Back model is and how it provides a simple heuristic for stronger leadership
- Reflect on their own approach, its strengths and limitations
- Understand How to apply the tool directly, and when to seek help from others such as a mentor.

The Play Café – Jan Spence & Jenni Magenta

QUALITY AREA 3 & 5

The Play Cafe will provoke educator thinking by demonstrating play environments that provide the WOW factor.

It is our intent to set up environments for educators to come and explore, play – and leave with some new ideas and enthusiasm. The emphasis will be on interactive participation with the play environments and fellow educators. Concurrently Jenni and I (with 2 senior, experienced educators invited to help us) will mingle at the play environments to participate in discussion, guide further thinking and instigate provocation as you would with children. Modelling appropriate communication to pose “wonder” questions will endorse the essence of the conference. There will be opportunities to discuss where further play provocation could be taken from the demonstrated start point.

There will be a short preface and activity to introduce the topic. It will remind participants of the importance of play in the development of creative and high-level thinking in children. It will link this to the critical “F” word... FUN. The workshop will conclude with a quick appraisal of the learning outcomes and evaluation of the content.

Industry, Finance & Performance – Connecting the Dots – Bankwest

QUALITY AREA 7

The provision of useful information and insights on the industry, trends and benchmarking from a finance perspective

Leading from where you stand – Dee Roche “Leading from Where You Stand”...Discovering your authentic leadership

If you've never been in a leadership role before, or you have just been promoted to your first management position. You're going to be responsible for leading and motivating

your team to accomplish overarching goals for your organisation. Now what?

This 2 hour workshop will focus on how you can use your existing strengths to meet new expectations. When you move up to a leadership position, your day-to-day activities and overall role are obviously going to change. The challenge that many new managers face is an understanding of how the skills and strengths they gained in their previous position can help them adjust to their new one.

During the workshop 4 key areas will be discussed:

The differences between Leadership and Management

There are key differences between leadership and management. Leadership creates change, often dramatic change & helps the organisation adapt to the changing environment. Management creates consistent and orderly results; and helps an organisation run efficiently, on-time and on-budget. Great organisations' and services create Managers who are also Leaders.

Leading from where you stand... Pursuing your Purpose with Passion

Most people struggle to understand the purpose of their leadership. In order to find their purpose, authentic leaders must first understand themselves and their passions. In turn, their passions show the way to the purpose of their leadership. Authentic leaders lead with their hearts as well as their heads. To some, leading with the heart may sound soft, as though authentic leaders cannot make tough choices involving pain and loss. Leading with the heart is anything but soft. It means having passion for your work, compassion for the people you serve, empathy for the people you work with, and the courage to make different decisions.

Practicing Solid Values

Leaders are defined by their values, and values are personal – they cannot be defined by anyone else. The test of authentic leaders' values is not what they say but the values they practice under pressure. If leaders are not true to the values they profess, people quickly lose confidence in their leadership

Establishing Enduring Relationships

The ability to develop enduring relationships is an essential mark of authentic leaders. People today demand personal relationships with their leaders before they will give themselves fully to their jobs. They insist on access to their leaders, knowing that trust and commitment are built on the openness and depth of relationship with their leaders. In return, people will demonstrate great commitment to their work and loyalty to the organisation.

100 Languages of Children – REmida

QUALITY AREA 3.2, 3.3

REmida provides a supportive exploration of reuse materials and encourages the development of unique learning environment experiences based on the poem “The Hundred Languages of Children” by Loris Malaguzzi, Founder of the Reggio Emilia Approach.

REmida has developed this Professional Development program to support, encourage and inspire the use of reuse materials as a sustainable option for all learning environments.

Outdoor Play Spaces from a Child’s Perspective: Affordances for Connoisseurship – Kimberly Beasley

QUALITY AREA 3 & 5

This presentation will share the methods of a qualitative case study, which was undertaken at Curtin University as a Master of Philosophy by Kimberley Beasley, under the supervision of Jenny Jay and Stefania Giamminuti.

Through this research, I sought young children’s perspectives on what is compelling in natural outdoor play spaces and on the affordances of the elements in the space.

This presentation will share the details of the Mosaic Approach, which is a new method for consulting meaningfully with children. It is based on the hundred languages of children and on article 12 of the UN declaration on the rights of the child which states that children have a right to have their voices heard on matters that directly affect their lives; which impacts on the decisions we make in early years services.

I will take participants through the steps of the mosaic approach and discuss areas where it could be useful to seek children’s perspectives in everyday practice.

Young children have the most amazing and important things to say; it is time the community really listened to children through enabling their hundred languages.

Session outcomes:

To express the importance of the youngest and most vulnerable members of our community having their voices heard, to demonstrate the important things children have to say and to provide a model for consulting with children

An Invitation to Play – Caroline Fewster

QUALITY AREA 1.2.2 , 5.2.1, 5.1.2

Play & learning materials in early childhood programmes are the foundation of the teaching and learning process. They support what each programme values and frame the possibilities and actions for play & learning with children.

Children constantly use materials to learn about the world, explore their questions and represent their thinking.

Let’s consider some new possibilities for play & learning materials with a Pop Up display!

Participants in this interactive workshop will be able to:

- interact with a Pop Up display of play & learning materials with an enhanced view of children
- invent new possibilities for familiar materials
- choose materials that can be transformed
- provide materials to extend children’s interests

KPI’s for the Business & Staff – Glen Taylor

QUALITY AREA 7

Business owners need to be able to measure the performance of their business easily and reliably, so they can make timely informed decisions. Without these measures, the business owner is ‘flying blind’ at worst, or with one eye open at best. A business dashboard is a set of ‘dials’ that provides the management team with a regular measure of the performance of the business. The dashboard ideally has targets and shows trends. It has dials for the different aspects of the business, so collectively all of the dials provide the management team with a fairly clear view of the performance of the business and what needs to be done to correct an issue or to just generally improve.

Business owners need to grow and develop their staff. In particular, they need to coach their key staff to develop to the ‘next level. One of the most effective methods to develop key staff is to meet and discuss on a regular basis their performance against clear measures (KPIs). So having good measures and a procedure to meet and discuss with key staff how to meet targets is key to getting the best out of them.

Session outcomes:

1. An understanding of the importance of KPIs for effectively managing a business
2. How to develop a dashboard of KPIs
3. An understanding of how goals and KPIs can motivate staff
4. How to develop meaning measures for staff

Nurture yourself and your organisation – AHD Network

QUALITY AREA 4

Learn how nutrition & lifestyle can impact your mental & physical health. In this workshop AHD Network will provide education about how to nurture yourself, through understanding the benefits of good nutrition & lifestyle. A healthy team is more effective in the workplace and will respond to the needs of the sector more readily. Improve your organisations productivity and wellness culture by attending this workshop.

EYLF for Educators – Nesha O’Neil

EARLY YEARS LEARNING FRAMEWORK

This workshop is aimed at creating better early childhood educators by reflecting on what the outcomes of the Early Years Learning Framework mean for them.

Ultimately, in embracing the EYLF, we are aiming to facilitate for our children the realisation of 5 core outcomes. If much of learning these children do is from the role modelling provided by their educators, it is worth reflecting on how much the educators can say that they embody the outcomes themselves.

Participants are asked to reflect on their ‘strong sense of identity’, ‘connection and contribution to the world’, ‘strong sense of well-being’, ‘effective communication’ and whether they are ‘confident and involved learners’.

We look at the kinds of opportunities in each of their lives to demonstrate this, and then how this genuine approach to learning can be brought to the early learning environment successfully.

Participants also gain further insight to the EYLF by considering how it applies to them personally. We also discuss some of the challenges of doing this, and how to work through them.

Through a solution-focused discussion, participants identify how they want to present themselves to their children, families and peers; how this can be linked back to the EYLF and form the basis of fantastic learning relationships and environments; the steps that they would need to take to do this in their setting; and the beginnings of an action plan.

Does it take a village to raise a 'child' or do 'Children make the Village'? – Gudrun Gilles

QUALITY AREA 6, 5, 1

This workshop will celebrate the diversity of experiences that children come across when raised in a 'village'. How these villages look and who makes up the community surrounding the child has an impact on their view of the world and their concept of self.

We will explore different village concepts, historical factors and cultural changes impacting on the way we raise children.

Come on a journey of discovery. Collect opportunities, experiences and networks that you can open up for children.

Be introduced to the world of traditions and rituals that make a tribe/village/community.

Session outcomes:

- Educators will know how (and have tools) to profile their cultural environment
- Educators will have identified strategies to engage with children/families/communities of their professional environment
- Educators will have commenced the development of an action plan to take back to their work environment

Protective Behaviours WA – Andrea (more to come on this topic)

KEY-NOTE PRESENTATION SUNDAY QUALITY AREA 2

What makes early childhood settings great places to be? – Caroline Fewster

Facing the future together can be an opportunity to expand our vision of what may be possible.

Embracing the idea of the physical environment as a significant educator in early childhood programmes, requires expanding our thinking beyond the notion of a room arrangements – to designing an environment with interesting materials, sets the stage for investigation, complex play and joy in learning.

Participants in this address will be able to explore concepts, such as:

- Thinking beyond the status quo
- Learning from other countries
- Challenging long-held assumptions about early childhood practices

WA State of Play on the National Scene – ECRU

State of Play – This session will provide a comparison of how WA is travelling Nationally in relation to assessment and ratings and will also provide some interesting information in relation to compliance in WA.

Leading through a Critical change Environment – Brianna Casey

Brianna's session will focus on leading in a critical change environment, with personal reflections on leadership and the importance of early childhood educators being influencers and advocates in their local communities. Brianna will provide insights into both policy and politics, as well as the 'once in a generation' reforms to early childhood education and care in Australia. She hopes to have you walking away from this session with the tools and motivation to bring about positive change, whether it is at home, at work, or in your community.

A Dependable Best Friend- Primary Caregiving in Education and Care Services – Nadia Wilson-Ali

QUALITY AREAS 2, 5 & 6

The earliest attachments that children form with their primary caregivers has a huge impact that continues to be an influence throughout their lives. This session will provide an overview to attachment and its importance in the early years in relation to children's physical, emotional, and mental health. Participants will be encouraged to consider children's need for attachment in formal care settings and to critically reflect on current practice. Hands-on experiences will provide educators with practical strategies and ideas to bring back to their services to facilitate the development of attachment between educators and young children.

Session outcomes:

- Educators to begin to understand the importance of developing meaningful relationships with young children
- Educators to learn about primary caregiving
- Educators to learn practical ways to implement primary caregiving in their context

The Paly Cafe 'Science & Maths' – Jan Spence & Jenni Magenta

QUALITY AREAS 1 & 4

The Play Cafe – Science and Maths in action will incite educator thinking by demonstrating simple science and maths provocations that provide the WOW factor.

It is our intent to set up encounters with simple science and maths phenomenon, using natural and easily obtained products that are inexpensive. Educators will have the opportunity to discover how children build an interconnected understanding of their world and how it works, all through play.

Maths and Science is embedded in everyday recreation and life activities, but it can be enhanced by a clever educator extending that knowledge. Come and build your own confidence and understanding to effectively communicate enthusiasm for science and maths topics with children.

Scientists form hypotheses and search to prove or disprove them. Children are also learning about how changes may occur because of their actions. Simple predictions such as "what will happen to my ice block in the sun?" or "which toy will float in the bath" are examples of predictions which can be investigated independently. All budding scientists develop their skills through play.

Similarly Maths concepts grow from exploring the play environment and hearing words that describe numerical actions – half, quarter, more, less, greater than, full, empty, bigger, smaller – for example. It is life in the sand pit, with clay, using blocks in the kitchen and everywhere else that becomes a laboratory of detection.

Mathematical sequence and pattern can be seen everywhere, if we stop to explore it with children. The symmetry of nature is evident in any garden, if we spend time sharing a child's exciting discoveries.

Participation in this workshop will offer the capacity to share planned environments with your peers and link this to curriculum design. When you can investigate, problem-solve, predict, estimate, question, think, strategise and wonder, then you are releasing your inner science and maths specialist, and capturing the same for a child.

There will be a short preface and activity to introduce the topic. It will remind participants of the importance of hypothesising in the development of science and maths knowledge, and high-level thinking in children. It will link this to the critical "F" word...FUN. The workshop will conclude with a quick appraisal of the learning outcomes and evaluation of the content.

EYLF/NQF/NQS what does it all mean? – Nesha O’Neil

This fun and interactive workshop aimed at educators will be about how these acronyms actually affect your day to day practice.

What does it mean or look like to have the NQS/NQF/EYLF/A&R in your service.

This workshop for an educator on the ground floor with their hands full will walk away understanding what this all means.

Growing Young Minds with Pleasurable Food Education – Stephanie Alexander Kitchen

QUALITY AREA 2.2

EARLY YEARS LEARNING FRAMEWORK

Gardening and cooking provide many learning opportunities for children in the early years. A hands-on, seasonal approach to pleasurable food education includes many tasks and responsibilities that link naturally to the Early Years Learning Framework.

Together with children, educators can plant seeds and care for plants, and encourage children to develop responsibility and empathy for the living things in their care. Children can sample seasonal flavours and try new foods based on healthy recipes that use the familiar plants they have grown themselves. They share food and celebrate our community’s cultures.

Many of these regular kitchen and garden activities underline the principles and practices in the Early Years Learning Framework.

In this dedicated early years workshop, Stephanie Alexander Kitchen Garden Foundation CEO Ange Barry will discuss the importance and benefits of pleasurable food education and what the Foundation has learned from working with young children in schools since 2001. Participants will experience how these learnings can apply directly to Early Years Educators through an interactive Sensory Kitchen Garden Experience facilitated by WA Officer Marcelle Coakley (it will be a lot of fun!)

This is an opportunity to engage with and learn how to access and take advantage of the Foundation’s wealth of knowledge and experience in food education for children. Participants will get a first-hand look at the Foundation’s range of support services, now open for the first time to all kindergartens, preschools and childcare centres.

The Commercial Seasons of Childcare – Mark Evans

QUALITY AREA 7

The ‘experience of childcare is a Services greatest and most effective promotional tool. With that said, it’s also the most logical area to invest promotional dollars given that referral is and will always be the dominant source of new enrolments.

You couldn’t ask for a more perfect situation: invest in the day-to-day experience for children & their families and potentially grow the business at the same time! But, why is it that many Services do not recognise this as an opportunity?

First & foremost, they’re too busy to see it for what it is and secondly, just getting underway with a sustainable routine can be overwhelming.

I cover both challenges within my presentation titled The Commercial Seasons of Childcare and help.

Services integrate a routine whereby they’ll be focussed on community awareness, referral, new enrolments and retention – at the same time, working on operational & compliance requirements.

Session outcomes;

1. Becoming a ‘time-smart’ Service is about the recognising then shedding unproductive habits and routines
 2. Integrating commercial behaviour into everyday operations and avoiding one-off ‘hit & miss’ promotional activities
-

Understanding employment based risks– Christine Boucher

QUALITY AREA 7.3.5

When we think about managing risks in early learning centres, it’s easy to think of the risks faced by children, such as injuries. However there are many other risks to consider, including risks affecting staff.

This session will focus on the following two key risk areas for staff at early learning centres;

- Work health and safety injuries
- Employment disputes

The session will use real claims examples, as seen by Guild Insurance, to highlight to attendees what can go wrong in both of these areas. Attendees will be made aware of their obligations to reduce the risk of something going wrong. They’ll also be provided with practical tips and strategies for reducing these risks.

QIP the living Document/ Demystifying the Assessment and Rating Visit – ECRU

QUALITY AREA 1

This session will focus on how to your team can develop a meaningful QIP that demonstrates the self-assessment of the services performance in delivery of a quality education and care program and the plan for areas of ongoing improvement, how and when the improvements will be made and how you are progressing with the improvements.

Demystify the Assessment and Rating visit – The assessment and rating visit is intended to be a cooperative approach celebrating your practice and providing opportunities for services to discuss and supply evidence on how they are meeting the National Quality Standard, this session will provide tips and guidance on how to prepare for the visits, what to expect during the visit so your team is able to shine on the day. Additionally the session will dispel myths and provide guidance on how to provide meaningful additional evidence.

Peaceful Possibilities – Jennifer Ribarovski

QUALITY AREA 3 & 6

Young children are growing up in an increasing complex and often troubled world. This requires educators to respond to our rapidly changing world and work with children and families in the context of the realities that they live in the everyday.

This presentation examines the potential to work with children on developing inclusive and harmonious attitudes and dispositions through the lens of the NQS and the EYLF. It will advocate for children’s agency to be considered for its possibilities to unite, builds social sustainability and position children as advocates for kindness and humanity, both now and into the future.

Participants will understand:

- The relationship between practice and building a sustainable future together
- The interrelated nature of the National Quality Standard, and the ways in which a sustainable future is relevant to more than just Quality Area Three
- That the notion of sustainability extends beyond just environments, to communities and to ways of being and knowing
- That inclusion and a sense of community is fundamental to sustainability in a range of forms



MURDOCK EDUCATION

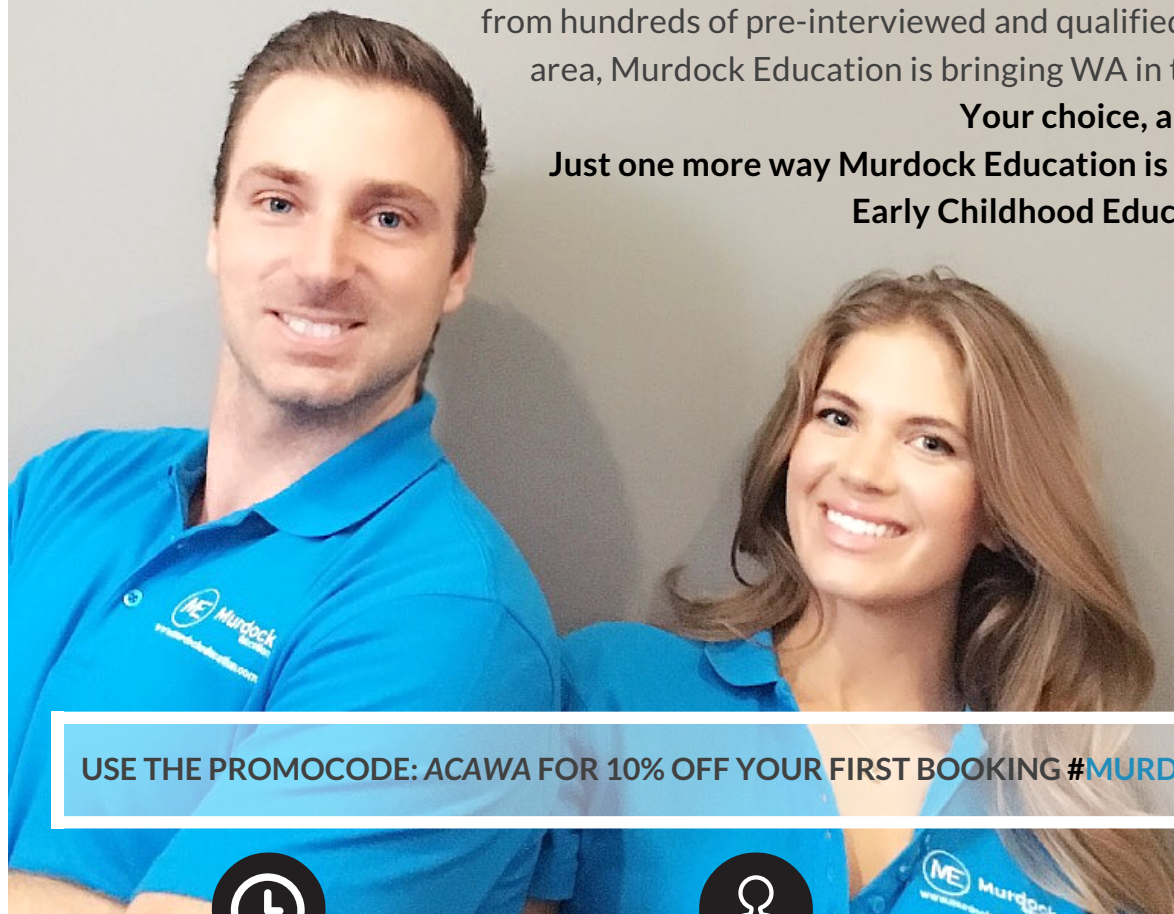
Bringing quality to education recruitment

YOUR LOCAL EARLY CHILDHOOD RECRUITMENT SPECIALISTS BRING YOU MURDOCK ON DEMAND

With a new, innovative app providing instant access to choose from hundreds of pre-interviewed and qualified educators in your area, Murdock Education is bringing WA in to the 21st century

Your choice, anytime, anywhere.

**Just one more way Murdock Education is bringing quality to
Early Childhood Education Recruitment**



USE THE PROMOCODE: ACAWA FOR 10% OFF YOUR FIRST BOOKING #MURDOCKONDEMAND



RELIEF EDUCATORS

Pre-qualified and interviewed Educators equipped with smart uniforms and provided with ongoing professional development.



PERMANENT RECRUITMENT

Our extensive networks in the industry make us your first choice when looking for qualified Educator's to join your team permanently.



MURDOCK ON DEMAND

Pin your location, select requirements, choose your Educator. It is as simple as one tap to book for relief from your computer or android phone

UNIT 6/79 BRISBANE STREET, PERTH 6000 | 08 9227 8084

BOOTH LAYOUT



Booth numbers

1	2	3	4	5	6	7 & 8		9	10
 GB Education™	 St John	 bankwest FOR BUSINESS	 Guild INSURANCE	 ChildCareSuper Helping you get there	 Diamond Lock & Security	 BELLING Kid-2 Educational Resources		 Officeworks	 NextGen Power NGLAR and Battery Storage Solutions
11	12	13	14	15	16	17	18	19	20
 one tree community services	 QCA Queensland Curriculum Australia	 my life super	 EARLYWORKS	 awe & wonder	 CHILDSAPES	 vetassess	 EXIMIA JALISON Helping you grow tomorrow	 MURDOCK EDUCATION Professional Education Services	 mta modern teaching aids
21	22	23	24	25	26	27	28	29	
 mta modern teaching aids	 HESTA National Institute for Community Services	 AHDNetwork Australia's Health & Disability Network	 FOOD SAFETY	 Nature 4 Kids	 Meerilinga Learning and Living in the Community	 JUNIOR GOALS	 PROTECTIVE Child Protection Services	 National Institute for Community Services	

Logan's Ride



ACA WA has chosen a very worthwhile cause to raise funds for at our “Facing the Future Together” Conference, HeartKids WA.

HeartKids are dedicated to providing support, encouragement and hope to families of children with Heart Disease, while raising awareness and vital funding into the causes of this chronic disease. HeartKids organises family and teen activities and camps to foster important social support networks and to give young people with childhood heart disease an opportunity to undertake activities in a supportive environment.

HeartKids Teen Camps: Their aim is to provide the opportunity of Teen Camp to more Teens than ever before, so plans are underway and it is currently expected that there will be 3 camps next year.

‘Story from a family who lost her son/brother Logan Adams to heart disease last year, and what they are doing so more teen heart kids can get the opportunity to attend the camps.’

Logan Adams, our 18 year old son, brother and friend passed away from complications with his heart. We feel privileged to have spent 18 valuable years with such a special person. Throughout Logan’s life, he and his family have been very grateful for the support from HeartKids WA – a not for profit organisation, who support children and families with congenital heart disease.

For Logan, Heartkids was life changing, as they gave him the opportunity to attend four Heartkids Teen Camps in Sydney and Melbourne. Until then, he had never met any other children with a similar condition to him. Attending these camps helped him come to terms with his illness, share stories, be physically challenged and emotionally supported by the team of volunteers and the teenagers themselves. As you can imagine, the cost to send one child to these events is large. Unfortunately, HeartKids Australia has not been able to secure ongoing funding for the Teen Camp, meaning that each state will now have to run their own camp. This will allow more children from all over the state to be able to share in this meaningful event, but for Heartkids WA, it means they now have to find the funding for an unexpected cost.

In honour of Logan’s impact on our lives, we want to recognise him by doing something really special. We want to make a large contribution to allow the first Heartkids WA Teen Camp to go ahead in 2017. Logan’s close friend approached us shortly after he passed away and told us of his idea to hold a bike riding challenge in rural South West WA, tracing Logan’s life through places where he lived, from Perth to Albany via significant Wheatbelt communities. This idea quickly took hold and we now have 20 riders and many support people to help us on our journey, which will take place from the 9th – 15th of July 2016.

If you would like to read more about our story and make a donation please visit our website www.rideforlogan.com for up to date information, photos and links. One of our team members will be in touch with you in the near future to see if you can help us achieve our goal.

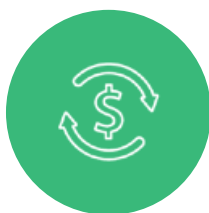
Even though the bike ride has been finished ACA WA, ask delegates to donate at the registration desk or at the Gala Dinner on the Saturday night. Donations can also be made directly at <http://heartkidswafundraising.org.au/event/LogansRide>



When the banks won't help, We do.

Helping you reach your financial goals,
no matter how complex your situation.

Flexible home, business and property loans
to meet your goals



Cash out for business
or personal use



Unlimited
debt consolidation



Centralink family support
payments included

Call now for a free appraisal on

1300 110 131

info@fundsnational.com

fundsnational.com



Australian Credit License 386954
ABN 41 099 879 991