

EYLF Outcomes for Early Childhood Educators

Self reflection



Many thanks to Karen Martin



About Me



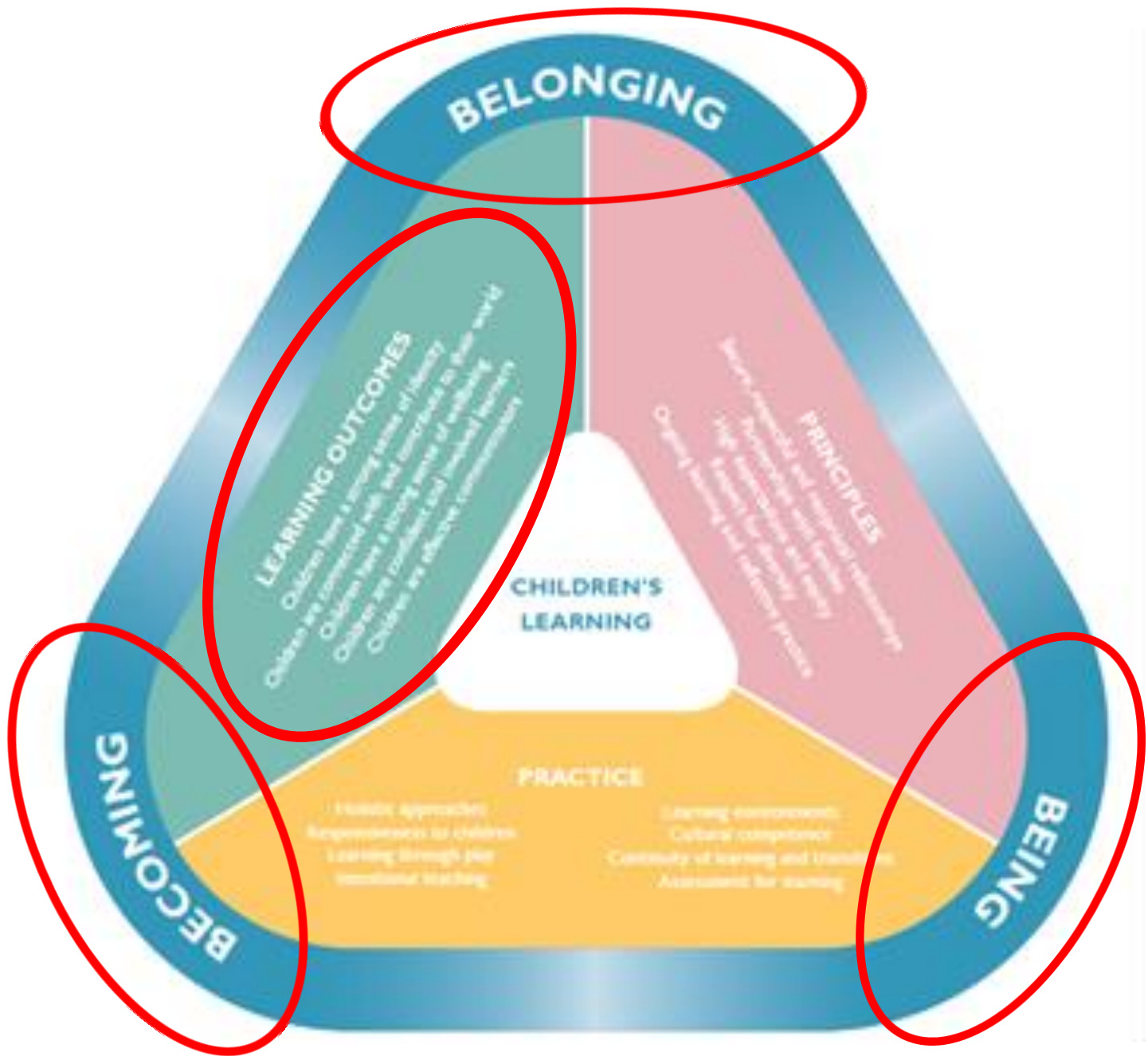
- 3rd Generation of ECEC
- 50 years + providing high quality ECEC in Sydney
- Private centre
- Psychologist
- Mother of 2
- BA (Psyc & Engl), MA (Psyc), MAPS, PGC Couns, PGC EC Spec Ed, Dipl Child Serv. Cert IV Training JP
- Runs 2 high quality centres in Sydney's North West
- President of ACA NSW

STELLAR
Learning Group



Early Years Learning Framework Learning Outcomes

- Reflective Practice
- Self reflection
- Solution focused discussion



Effective Educators

- What teaching tools / methods do we have at our disposal to teach our children?
- What is one of the most effective teaching tools we have at our disposal to teach our children?
- *No printed word, nor spoken plea can teach young minds what they should be. Not all the books on all the shelves – but what the teachers are themselves. Rudyard Kipling*

How do these Learning Outcomes apply to you?

- Do you have a 'strong sense of identity'?
- Who are you
- I am
- I am a
- I believe



How do we measure these outcomes?

- Have you achieved these outcomes?
- How do you know whether you are 'on track' or 'still developing' or 'need work'?



BELONGING

Experiencing *belonging* – knowing where and with whom you belong – is integral to human existence. People belong first to a family, a cultural group, a neighbourhood and a wider community.



Belonging acknowledges our interdependence with others and the basis of relationships in childhood, and throughout life, relationships are crucial to a sense of *belonging*. *Belonging* is central to *being* and *becoming* in that it shapes who we are and who we can become.

BEING



Being recognises the significance of the here and now in our lives. It is about the present and us knowing ourselves, building and maintaining relationships with others, engaging with life's joys and complexities, and meeting challenges in everyday life.

BECOMING

Our identities, knowledge, understandings, capacities, skills and relationships change during our lives. They are shaped by many different events and circumstances. *Becoming* reflects this process of rapid and significant change that occurs in the as we learn and grow. It emphasises learning to participate fully and actively in society.



What opportunities do you have to demonstrate and role model?



Early Years Learning Framework - Outcomes of Early Childhood Educators

When we're looking at the Early Years Learning Framework, there are 5 core outcomes that we are looking to facilitate in our children. It's worth stopping to take a moment, and reflecting on what kind of an early childhood educator you are.

Have you achieved these outcomes, are you able to role model them for the children?

Early Childhood Educators
have a strong sense of identity



Early Childhood
Educators are connected with and
contribute to their world

Early Childhood Educators have a
strong sense of well being



Early Childhood Educators are confident
and involved learners

Early Childhood Educators
are effective communicators



Early Childhood Educators
are effective communicators



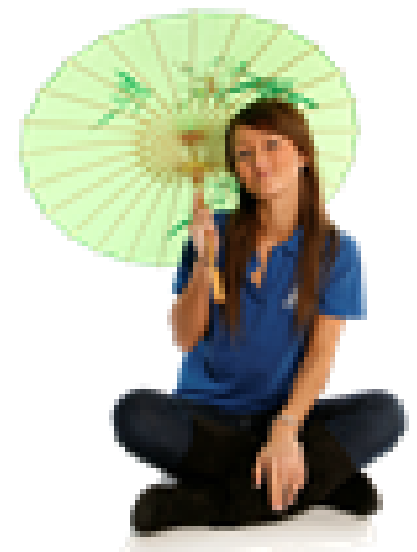
Early Childhood Educators
have a strong sense of identity





Early Childhood
Educators are connected with and
contribute to their world

Early Childhood Educators have a
strong sense of well being





Early Childhood Educators are confident
and involved learners

Taking it back.....

- How do you want to present yourself to your children, families and peers?
- How can this be linked back to the EYLF to form the basis of fantastic learning relationships?
- How can it be linked to the EYLF to create brilliant learning environments?
- What steps do you need to take to do this in your setting? – workshops, staff meetings, posters, resources?
- Start making an action plan



The kinds of questions you might like to explore with your team:

- For each outcome:
- If I were a 'confident communicator', what would that look like? What would the children see me do, hear me say? What would parents see and feel?
- Do our practices, around the centre, reflect this?

Questions?



Thank you